








Bytová jednotka 3.5 + 3.6

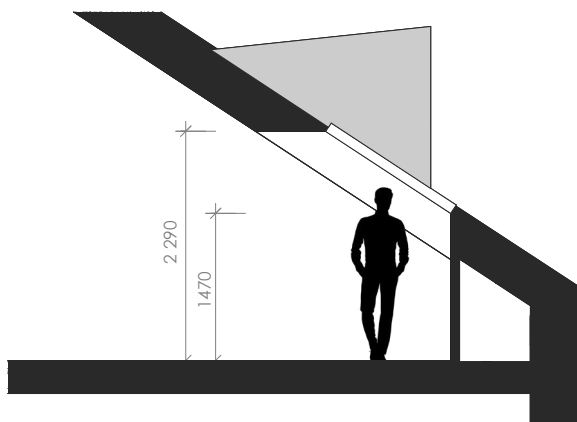
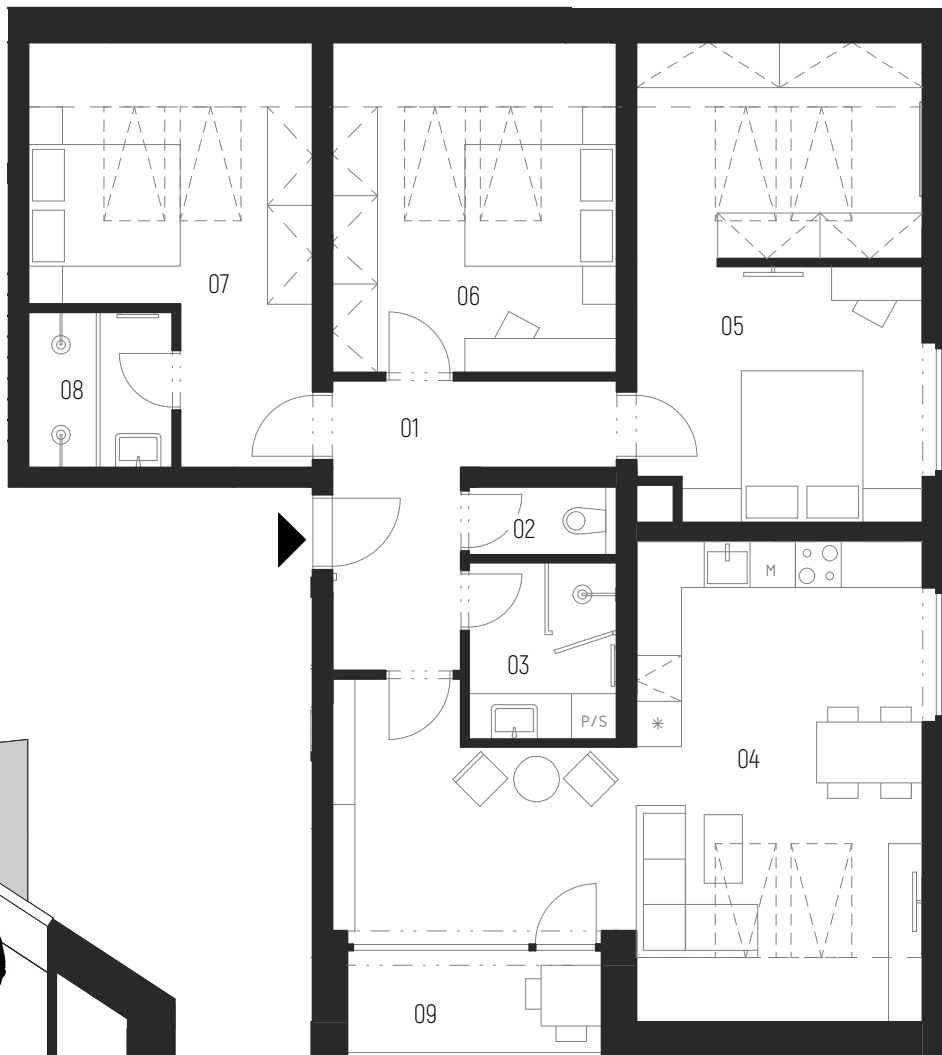
-  návrh interiéru
-  el. interiérové rolety

podlaží: 3.NP
 dispozice: 4+kk
 orientace: JZ
 celková užitná plocha: 85,3 m²
celková podlahová plocha: 105,52 m²

- 01 zádveří
- 02 wc
- 03 koupelna
- 04 obývací pokoj + kk
- 05 ložnice
- 06 pokoj
- 07 ložnice
- 08 koupelna
- 09 terasa

- 8,86 m²
- 1,76 m²
- 4,53 m²
- 32,79 m²
- 20,35 m²
- 13,12 m²
- 13,51 m²
- 3,89 m²
- 4,0 m²

- Praha centrum  20 min
- Letiště  15 min
- Supermarket  5 min
- Doprava BUS  2 min
- MŠ, ZŠ  2 min



BYT 3.5 + 3.6



kontaktní údaje:

608 301 842
 d.andrle@jakesdevelopment.cz
 www.jakesdevelopment.cz